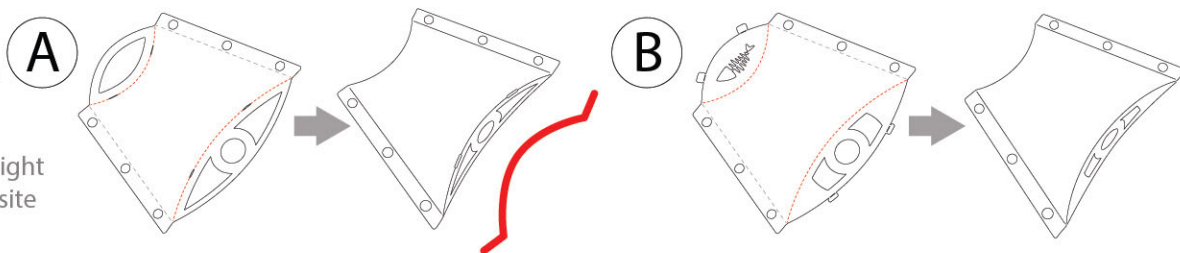


Connecting guide for Fish Bone Lamp Shade

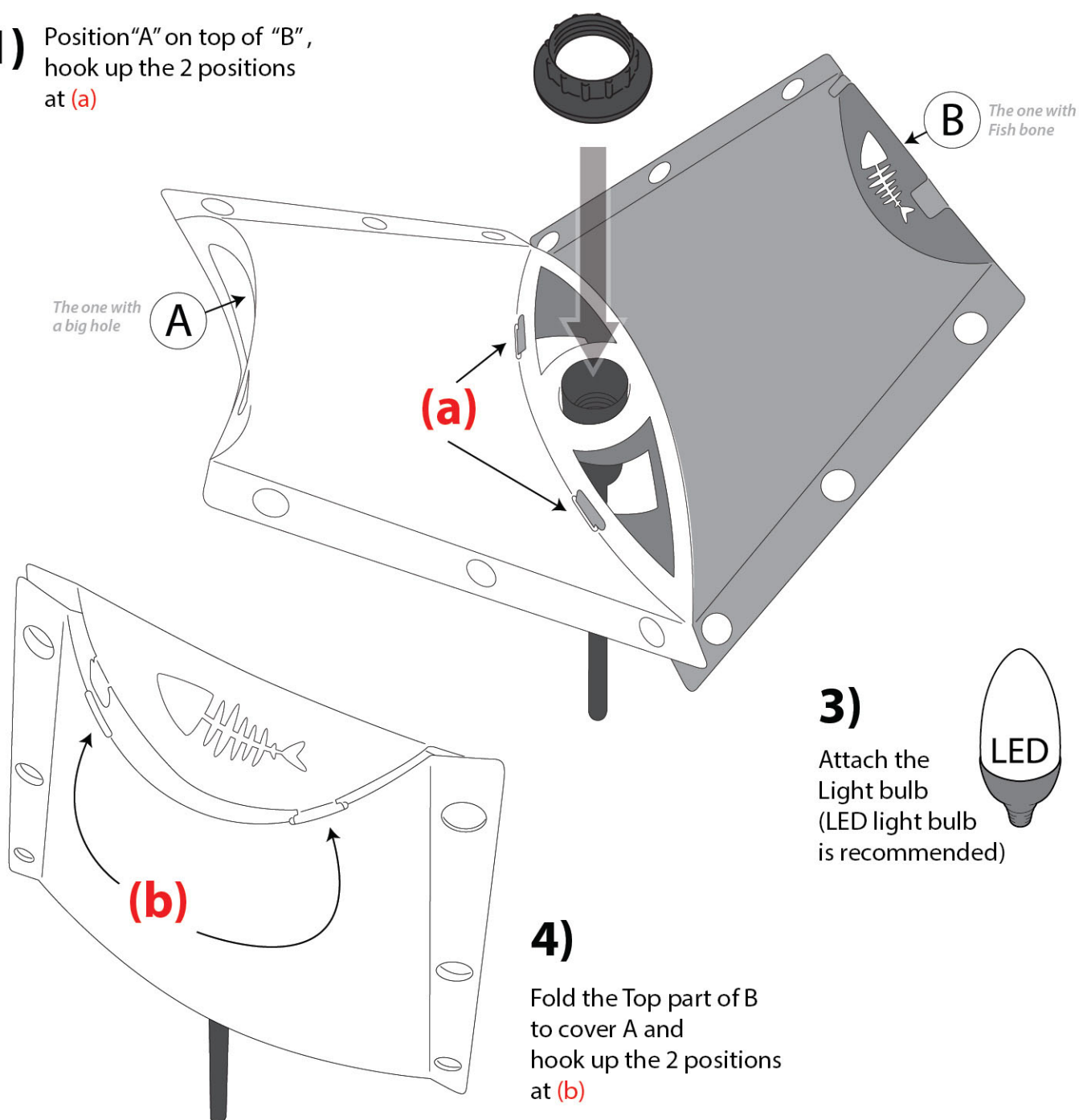
by MH

With the fold line **facing up**, bend the 2 arcs upward as shown.
Fold the other 2 straight folded lines in opposite direction.



2) Then place them on the Light bulb holder and screw down the locking ring
No need to be very tight so the Light Shade can be rotated afterward

1) Position "A" on top of "B", hook up the 2 positions at (a)



3)

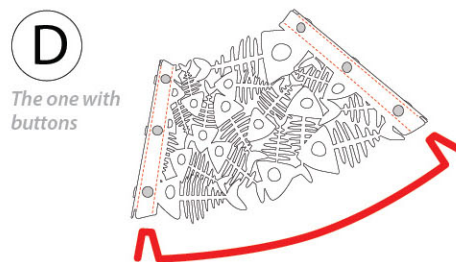
Attach the Light bulb
(LED light bulb is recommended)



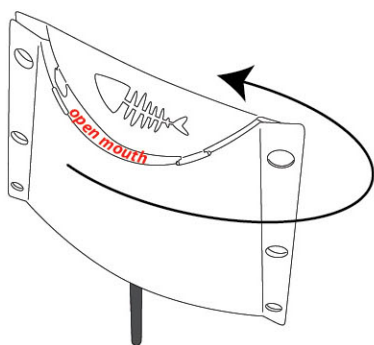
4)

Fold the Top part of B to cover A and hook up the 2 positions at (b)

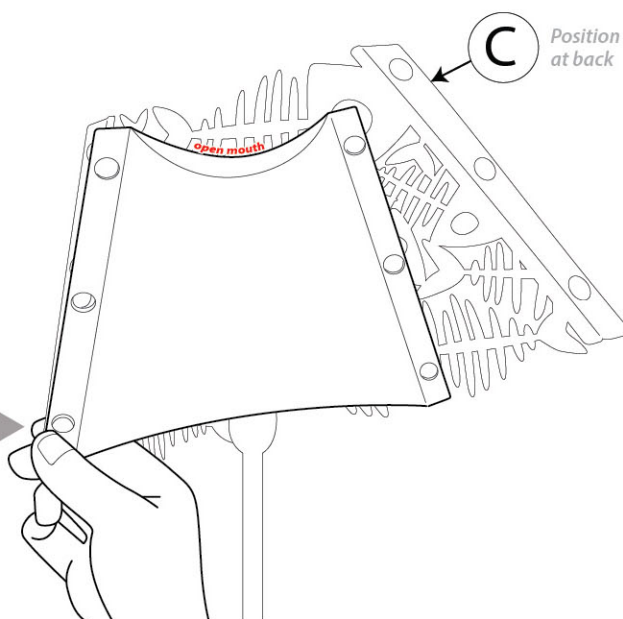
With the fold line **facing up**, bend the 2 straight folded lines as shown on the right diagrams



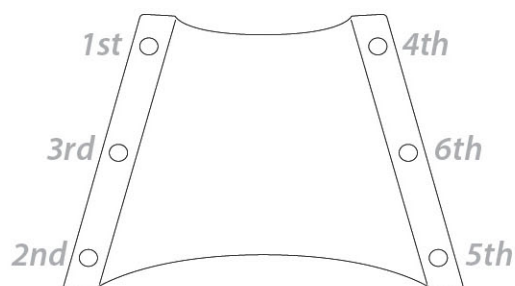
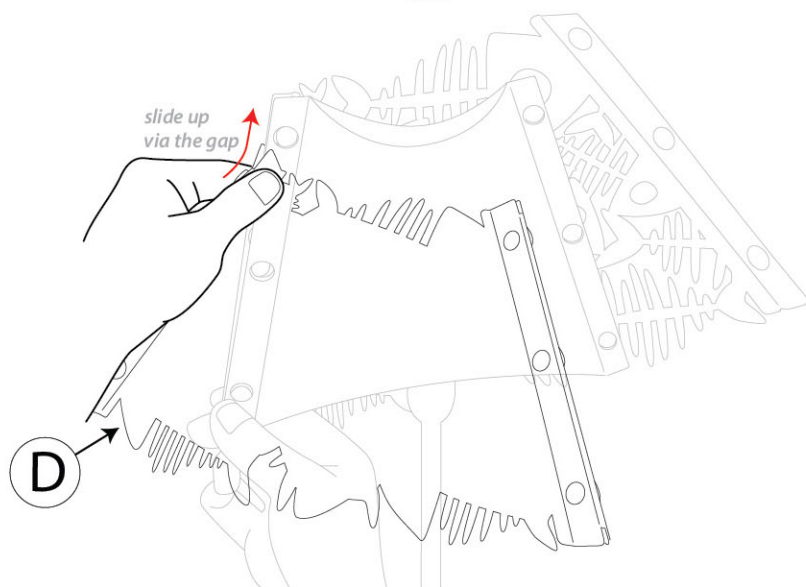
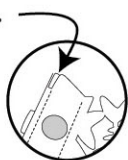
5) Turn the open mouth and facing the Fish Bone Shade "C"



6) Hold the Fish Bone shade at the back and align the 3 holes in position



7) Holding the top button area, **slide up** via the gap. The 3 holes at the top will be easily attached



8) Follow the above sequence, attached the 6 buttons accordingly